



卓越款电脑横机

EXCELLENT COMPUTERIZED FLAT
KNITTING MACHINE



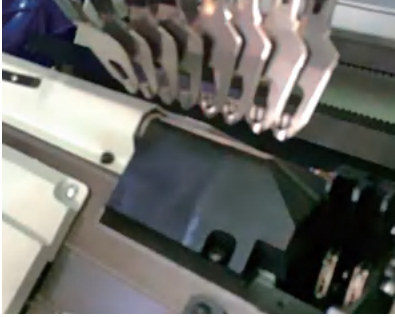


LXC

集多种高新技术于一体的尊享机型，配置高速小机头、动态密度功能、快速折返技术、双向收针及连片编织创新技术。搭配KDS针织工艺设计一体化制版系统，融合多个软件模块，各模块之间深度融合，数据互通，极大提升了毛衫从客户订单到上机生产的工作效率。全方位的上、中、下清洁系统（针板清洁系统、剪刀清洁装置和布板清洁系统）为机器的持续稳定生产提供可靠的保障。

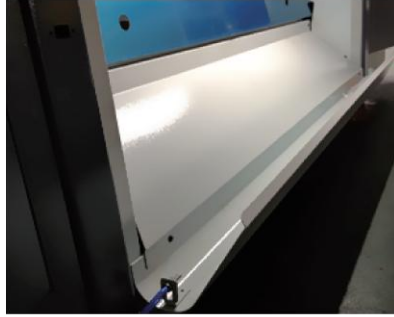
the premium model integrates various high and new technologies such as high-speed small carriage , dynamic density control function , fast return technology, two-way stitch decreasing and continuous knitting innovative technology. Combined with KDS knitting design and program making system, integrated with many software modules, each modules are in-depth integration, and support data exchange, which greatly improve the efficiency from sweater orders to production for customer . The comprehensive upper, middle and lower cleaning system (needle bed cleaning system, scissors cleaning device and cloth board cleaning system) provides reliable guarantee for the continuous and stable production of the machine.





剪刀清洁装置: 自动清除剪刀夹子的线头

The clean system within cutter:
Automatic clean the yarn debris within the cutter



落布板清洁装置: 辅助织物落布, 清洁落布板。

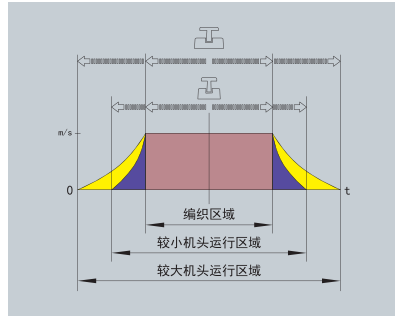
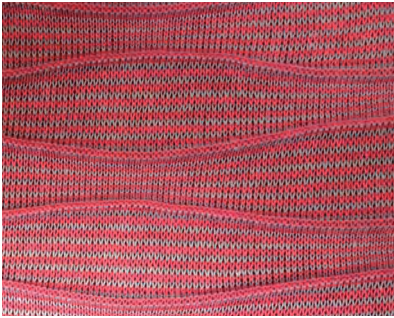
The clean system within fabric receiver: Help the fabric dropping and maintain cleaning for the fabric receiver.



新款侧天线: 对喂纱状态始终保持快速灵敏的感应控制, 以维持稳定的纱线张力。

The new side tensioner: It reacts fast and be sensitive for the yarn feeding, and keep yarn tension stable.





可变量目：同一编织行上的线圈长度在20个度目值范围内是可调节的。

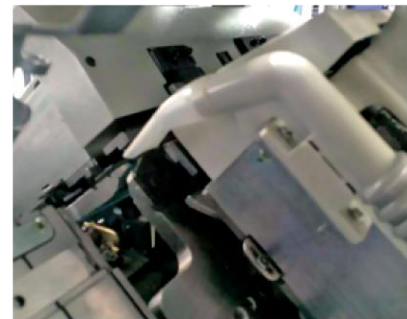
Dynamic stitch: The size of stitch within the same knitting row is adjustable within 20 degrees.

快速回转：全新设计机头与高性能的伺服控制技术给予机头的快速回转,可提高产量10%-20%。

Fast inversion: The new carriage and the high performance servo technology achieve fast inversion and increase the production of 10%-20%.

新款天线台：创新设计的新款电子感应天线台。

New top tension: Innovative design top tension with electronic interaction.



针板清洁系统：可高效地自动清除针板上残留的纱屑、灰尘。

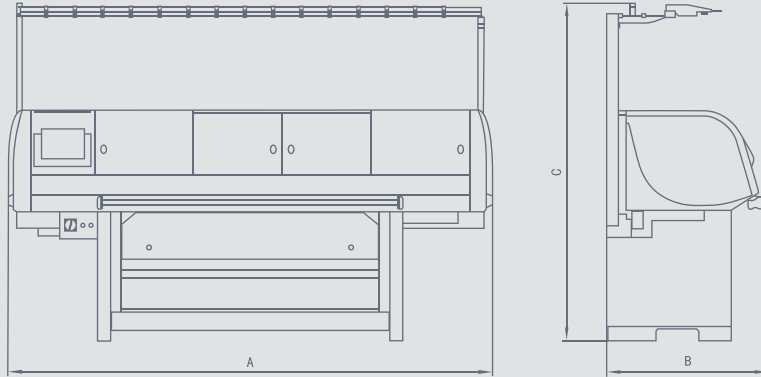
The clean system within the needle bed: Automatic clean the dust and lint efficiently over the needle bed.

产品参数

Model 机器型号	LXC				PREMIUM	
	LXC252SC	LXC352SC	LXC380SC	LXC260C	PREMIUM 2-132SS	PREMIUM 3-132SS
Basic parameters 基础参数	● Standard configuration				○ Optional	— Without
Gauge 针型	5G/7G (V) /8G/9G/10G/12G (V) / 14G (V) /16G/18G			3G/3.5G	5G/7G (V) /12G (V) /14G (V) /16G	
Carriage 机头数量	1	1	1	1	1	1
Knitting system 编织系统	2 SYSTEM	3 SYSTEM	3 SYSTEM	2 SYSTEM	2 SYSTEM	3 SYSTEM
Width (INCH) 宽度 (英寸)	52	52	80	60	52	52
Inset needle bed 插片针板	●	●	●	—	●	●
Running speed (M/S) 运转速度 (米/秒)	1.4	1.4	1.4	1.4	1.4	1.4
SMALL Carriage 小机头	●	●	●	—	●	●
Probe 探针	Infrared	Infrared	Infrared	Infrared	Infrared	Infrared
Motor transfer 马达翻针	○	○	○	●	○	○
Machine two side tool box 两边工具箱	●	●	●	●	●	●
Cleaning system 清洁系统	●	○	○	○	●	●
Motor driving selection JACK raise cam 马达换向	○	○	○	—	○	○
Needle bed racking 针板摇床	±2inch	± 2 inch	± 2 inch	± 2 inch	±2inch	±2inch
Sinker 信克	●	●	●	●	●	●
Lubrication system (auto, manual, none) 润滑系统 (自动、手动、无)	Auto	Auto	Auto	Auto	Auto	Auto
Tight tuck 紧吊目	—	—	—	—	—	—
Dynamic density 可变量目	●	●	●	●	●	●

Model 机器型号	LXC				PREMIUM	
	LXC252SC	LXC352SC	LXC380SC	LXC260C	PREMIUM 2-132SS	PREMIUM 3-132SS
Take down device 牵拉系统	● Standard configuration				○ Optional	— Without
Rubber roller 皮罗拉	●	●	●	●	●	●
Auto down roller 自动开合下罗拉	○	○	○	○	○	○
Manual down roller 手动开合下罗拉	—	—	—	—	—	—
Comb 起底板	●	●	●	●	●	●
Wire comb 无废纱起底	○	○	○	○	○	○
Scissors 剪刀夹子	●Two side	●Two side	●Two side	●Two side	●Two side	●Two side
Yarn device 喂纱装置	● Standard configuration				○ Optional	— Without
Top tension 天线台数量	16 PCS 20 PCS (V)	16 PCS 20 PCS (V)	16 PCS 20 PCS (V)	16 PCS 20 PCS (V)	16PCS /20PCS (V)	16PCS /20PCS (V)
Lycra feeder 氨纶送纱器	—	—	—	—	—	—
Yarn storage device 储纱器	16G and 18G				—	—
Yarn supplier device 送纱器	3G/3. 5G/5G/7G (V)/8G/9G/10G/12G (V)/14G (V)				●	●
Yarn carrier 纱嘴	● Standard configuration				○ Optional	— Without
Carrier quantity 纱嘴数量	16 PCS	16 PCS	16 PCS	16 PCS	16 PCS	16 PCS
Auto motor-driven carrier 智跑纱嘴	○ Max 8 pcs	○ Max 8 pcs	○ Max 8 pcs	—	○ Max 8 pcs	○ Max 8 pcs
Up-and-down motion carrier 自动上下纱嘴	○ Max 8 pcs	○ Max 8 pcs	○ Max 8 pcs	—	○ Max 8 pcs	○ Max 8 pcs
Weft insetion carrier 衬纬纱嘴	○ Max 2 pcs	○ Max 2 pcs	○ Max 2 pcs	—	○ Max 2 pcs	○ Max 2 pcs
Ultra-wide adjustable carrier (34-47mm) 超宽可调节纱嘴(34-47毫米)	○ Max 2 pcs	○ Max 2 pcs	○ Max 2 pcs	—	○ Max 2 pcs	○ Max 2 pcs
Double holes 双孔纱嘴	○ Max 4 pcs	○ Max 4 pcs	○ Max 4 pcs	○ Max 4 pcs	○ Max 4 pcs	○ Max 4 pcs

Model 机器型号	LXC				PREMIUM	
	LXC252SC	LXC352SC	LXC380SC	LXC260C	PREMIUM 2-132SS	PREMIUM 3-132SS
Safty device 安全装置	● Standard configuration				○ Optional	— Without
Emergency stop devices 紧急停车装置	●	●	●	●	●	●
Safty cover with infrared ray 护罩红外感应	●	●	●	●	●	●
Power cut off device 断电记忆	●	●	●	●	●	●
Alarm device 报警装置	● Standard configuration				○ Optional	— Without
Fabric rewind alarm (infrared ray) 布片倒卷报警 (红外线)	—	—	—	—	—	—
Fabric rewind alarm (detection board) 布片倒卷报警 (倒卷板)	●	●	●	●	●	●
Needle crash alarm 撞针报警	●	●	●	●	●	●
Yarn breakage alarm 断纱报警	●	●	●	●	●	●
Yarn knot alarm 纱结报警	●	●	●	●	●	●
Stroke protection device (racking) 摇床限位报警	●	●	●	●	●	●
Stroke protection device (carriage) 机头限位报警	●	●	●	●	●	●
Over load alarm 过载报警	●	●	●	●	●	●
Knit piece finish alarm 编织件数完成报警	●	●	●	●	●	●
Sepecific row stop 指定行停车	●	●	●	●	●	●
Program error 程序错误	●	●	●	●	●	●
Power 电源	● Standard configuration				○ Optional	— Without
AC 220V ± 5%(1phase 50/60Hz) 单相220V、50/60HZ	●	●	●	●	●	●
AC 380V ± 5%(3phase 50/60Hz) 三相380V、50/60HZ	○	○	○	○	○	○
Power consumption 功率	1.5KW	2.0KW	2.0KW	2.0KW	1.5 KW	2 KW



机器型号 MACHINE MODEL	外形尺寸(毫米) BOUNDARY DIMENSION(mm)	包装尺寸(毫米) PACKAGE DIMENSION(mm)	净重(kg) NET WEIGHT(KG)	毛重(kg) GROSS WEIGHT(KG)
	长 × 宽 × 高(A×B×C) LENGTH×WIDTH×HEIGHT(A×B×C)	长 × 宽 × 高 LENGTH×WIDTH×HEIGHT		
LXC252	2730×900×1900	2900×1050×1820	950	1130
LXC352	3000×900×1900	3300×1050×1820	1050	1250
LXC260	3100×1030×1900	3300×1220×1820	1360	1600

苏州梵洲科技有限公司

SUZHOU FANZHOU TECHNOLOGY CO.,LTD

江苏省常熟市阳光大道8号
No.8 Yangguang Road,Changshu City, Jiangsu, China

电话 T +86-15250337092

传真 F +86-15250337092

邮箱 E Juanschuan@gmail.com

Website: www.fanzhoultd.com

Whatsapp: +86-15250337092



Website



Wechat



Whatsapp